



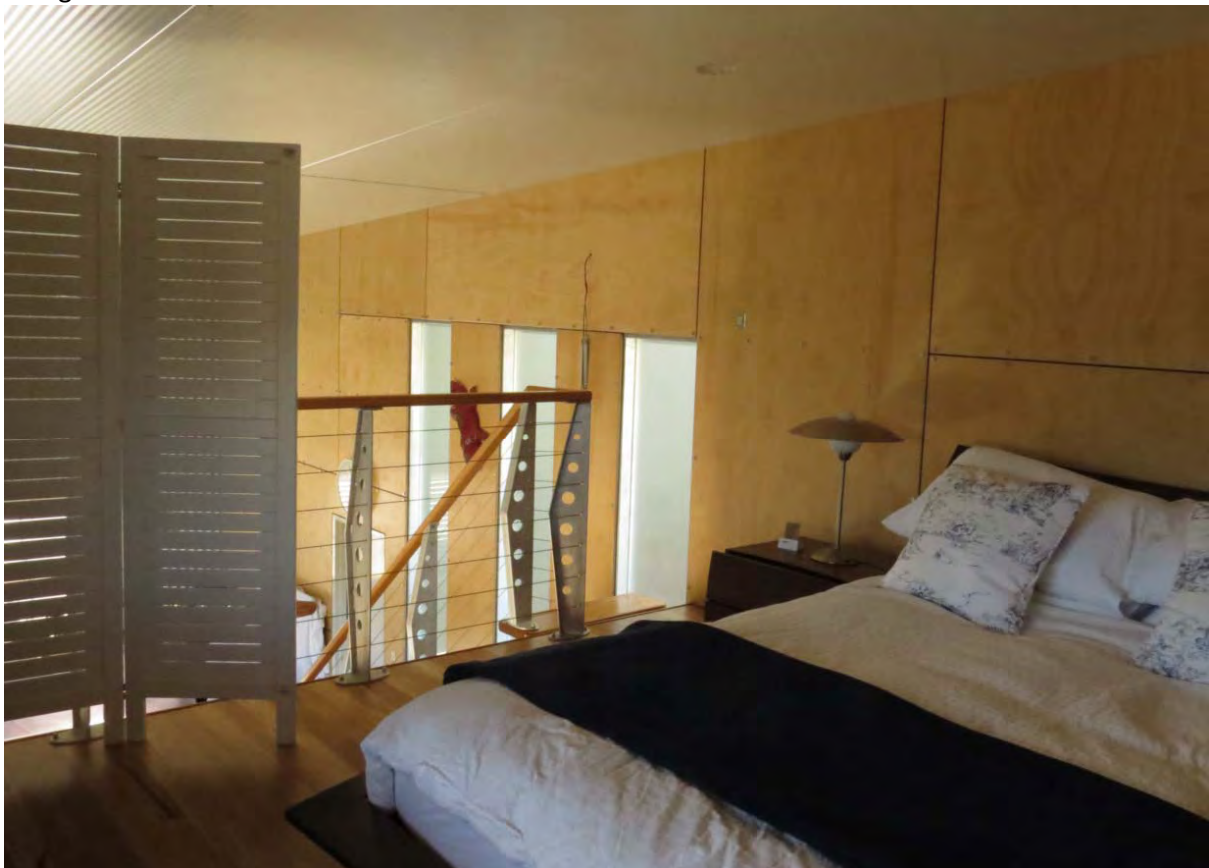
Aerial image of existing development; in context



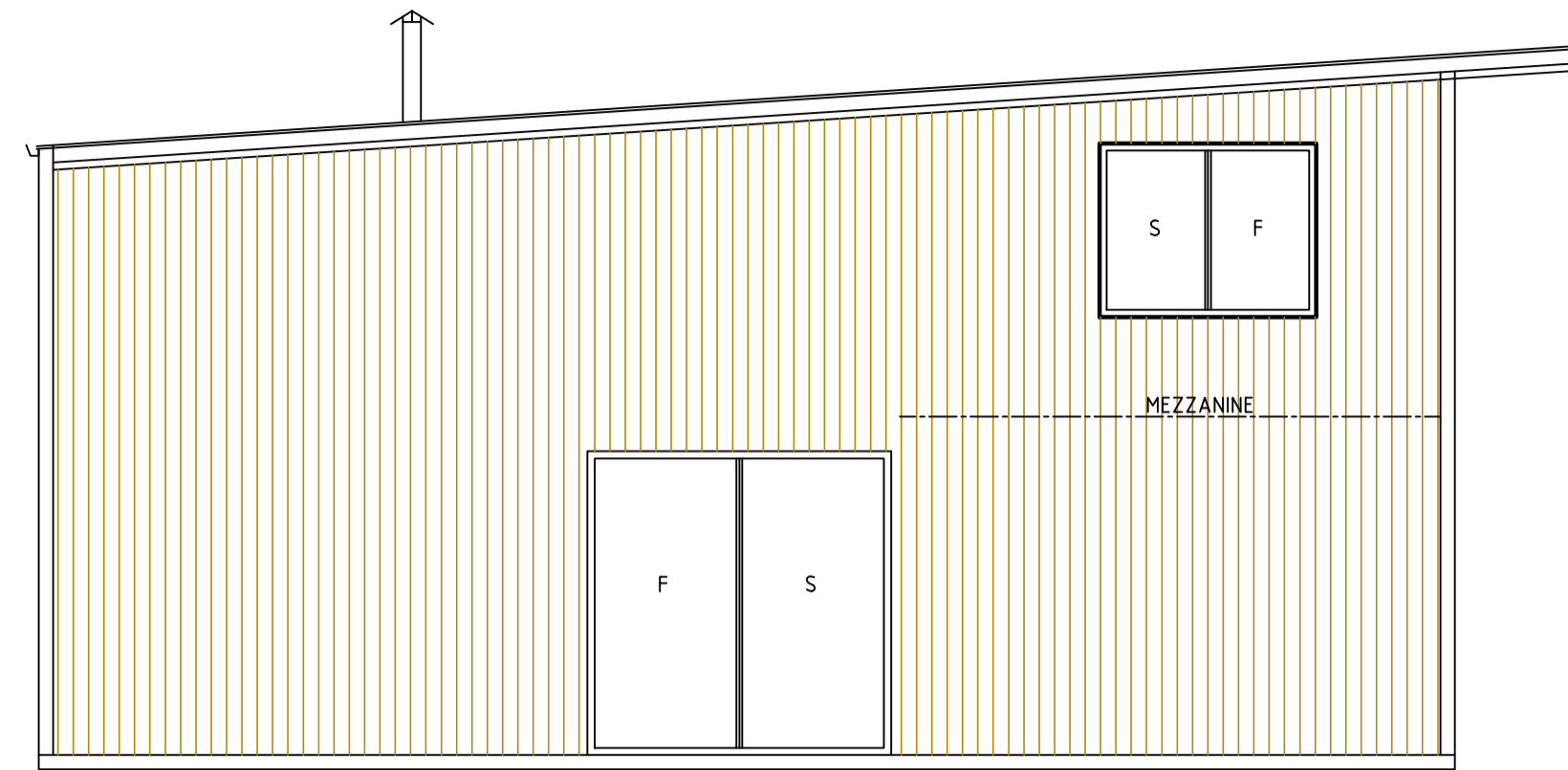
Kitchen space in ancillary accommodation



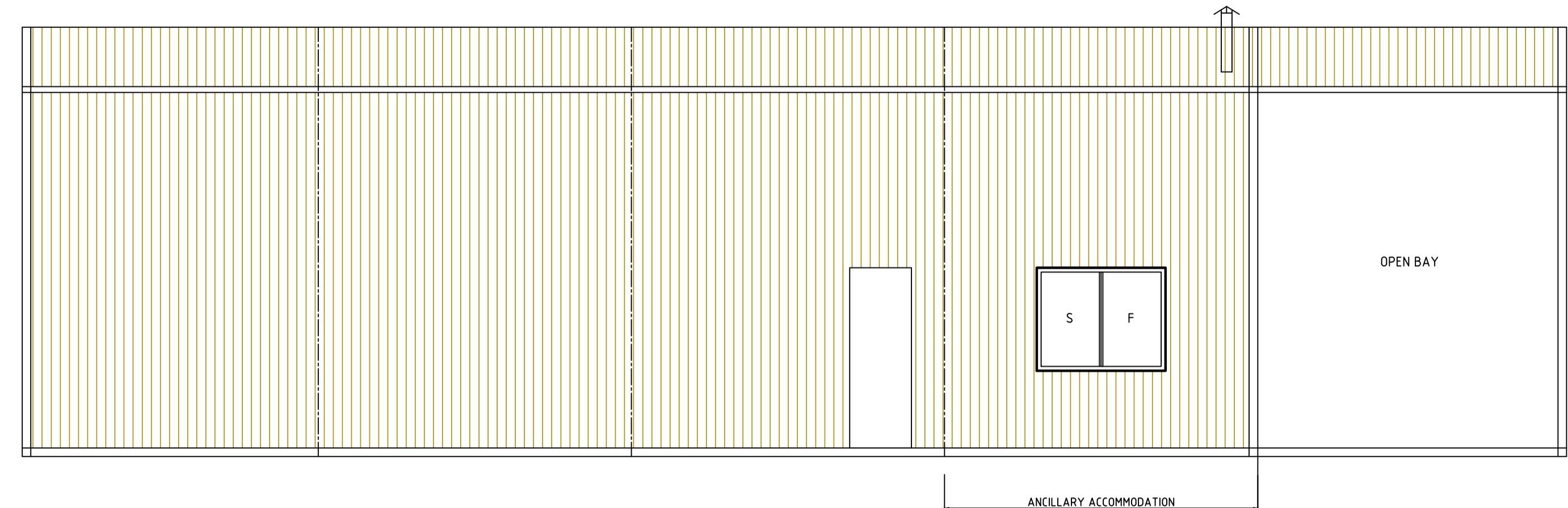
Living area



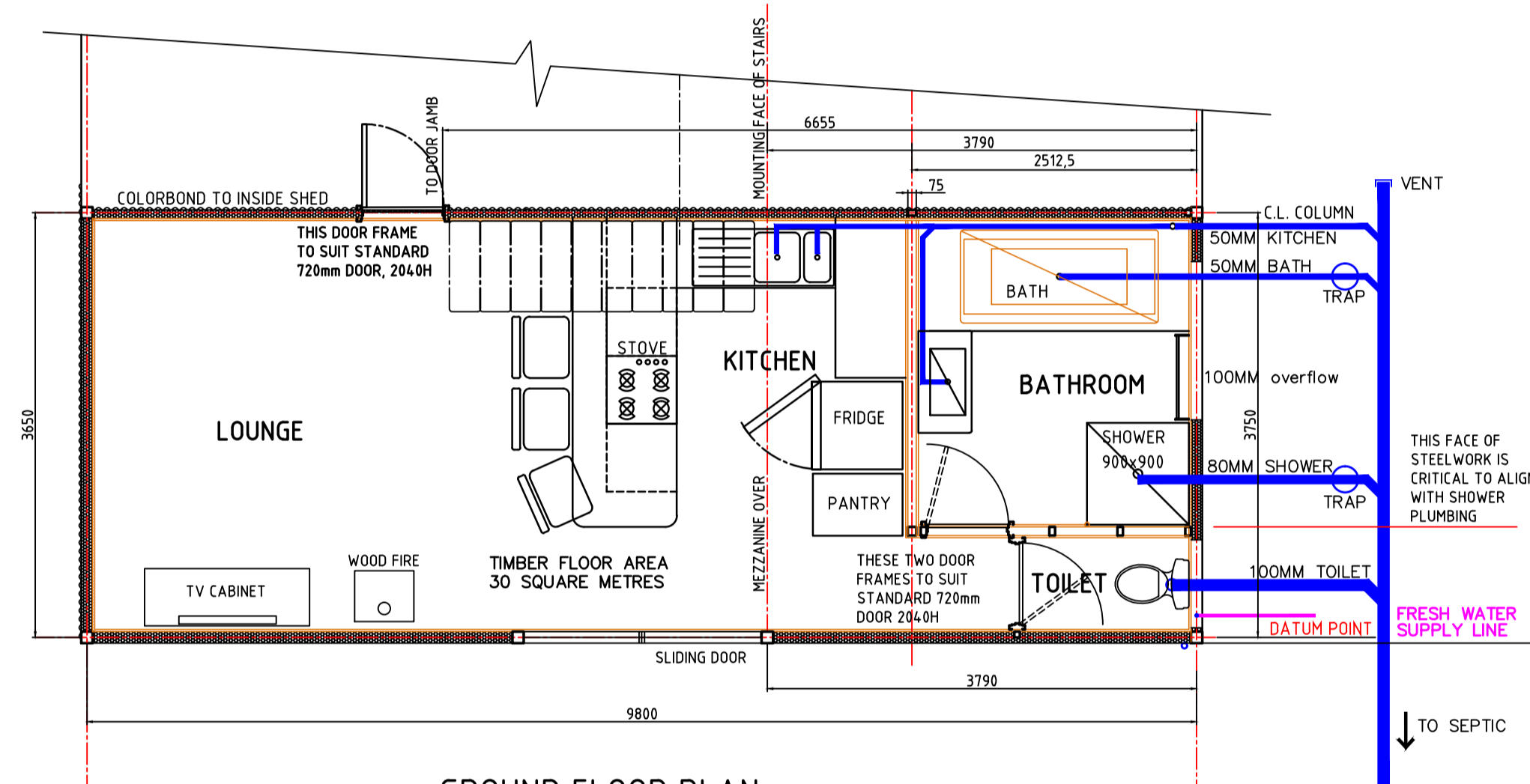
Bedroom



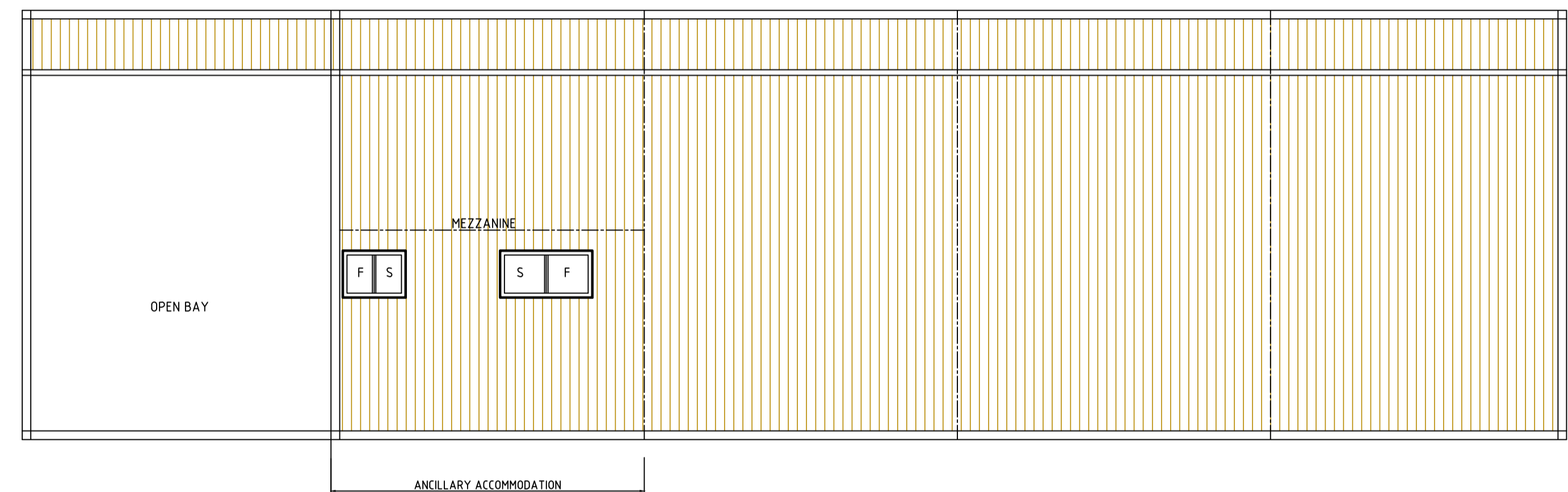
NORTH ELEVATION



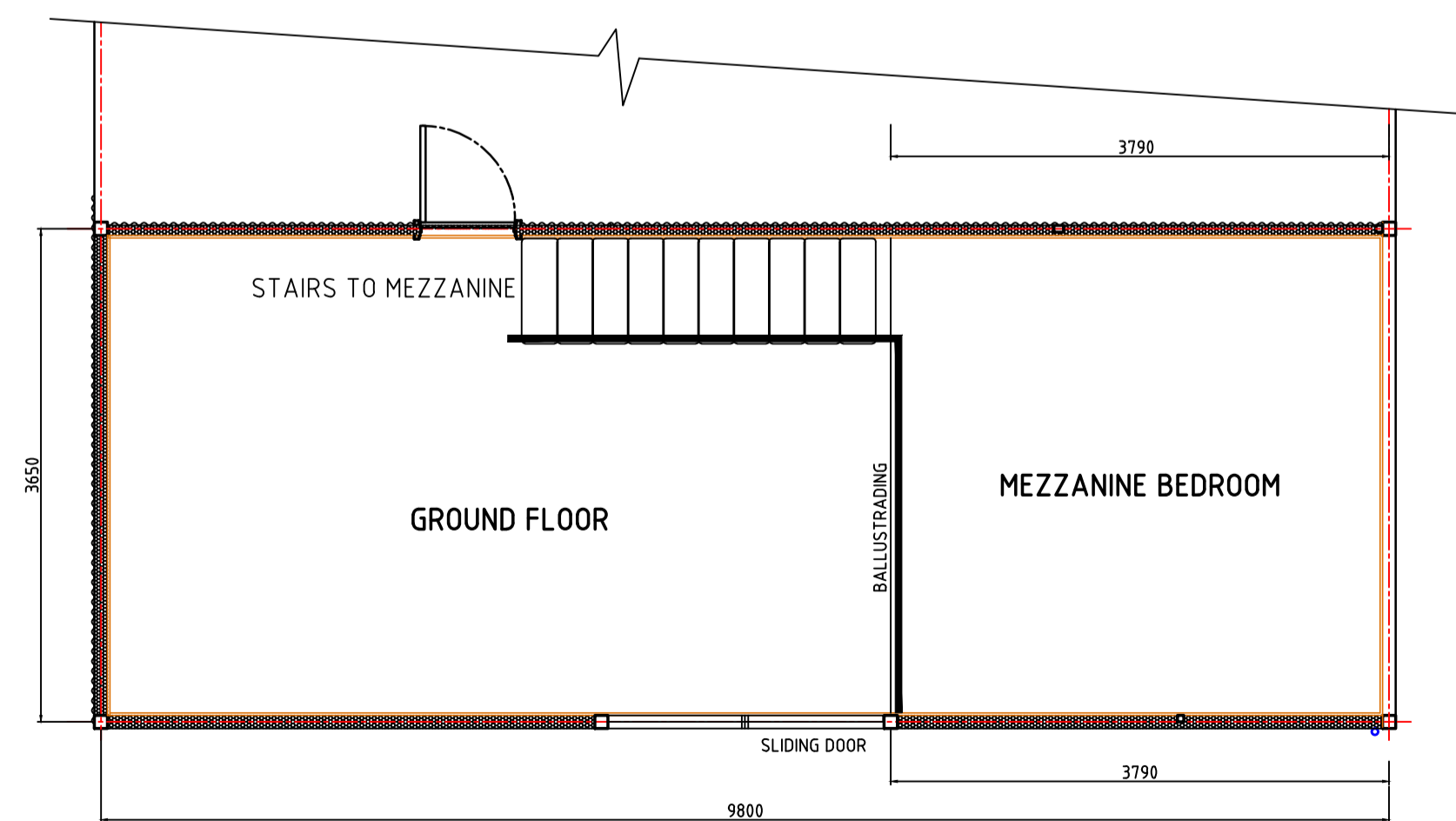
EAST ELEVATION



GROUND FLOOR PLAN



WEST ELEVATION



MEZZANINE FLOOR PLAN

Floor Construction:
 1. 50mm Polystyrene Foam on Ground.
 2. 100mm Concrete Slab
 3. 19mm Marine Ply
 4. 14mm Blackbutt Flooring

Wall Construction:
 1. Jasper Colorbond over steel frame.
 2. Air Cell
 3. 90mm R2.5 Wall Batts
 4. 19mm Marine Ply Internal

Roof Construction:
 1. Jasper Colorbond over steel frame.
 2. Air Cell
 3. 90mm R2.5 Ceiling Batts
 4. 50mm Solarspan Ceiling

RETROSPECTIVE OFF-GRID ONE BEDROOM ANCILLARY ACCOMMODATION
 FOR GAVIN AND JAYNE MAIR
 LOT 124 (548) WELLSTEAD ROAD STH
 POINT HENRY
 BREMER BAY W.A. 6338

December 2017

Scale 1:50 at A1

